

THE CERTIFICATE OF APPROVAL VALIDATES AS FOLLOW:

Product	Fire rated pedestrian doorset
Reference of the product	FIRECOR Uninsulated 44 mm
placed on the market by	Strongdor Ltd Carnforth Business Park - Oakwood Way Carnforth - LA5 9FD, United Kingdom
produced in the manufacturing plant located in	Morecambe, United Kingdom

In compliance with the Efectis Certification Rules **DAP 21 REV. N**, this certificate of approval attests that:

- the doorset is submitted by the manufacturer to a factory production control,
- the accredited laboratory EFFECTIS UK/Ireland has performed the initial type-testing for the relevant characteristics of the doorset
- the accredited inspection body EFFECTIS France has performed the initial inspection of the factory and of the factory production control and performs the continuous surveillance, assessment and approval of factory production control
- the accredited inspection body EFFECTIS France has performed the assessment of the accompanying documents, in accordance to the level of certification no 2 defined in the Efectis Certification rules DAP 21

	ASSOCIATED DOCUMENTS	INSPECTION REPORT	CERTIFICATE OF APPROVAL
<i>Number:</i>	Classification report: EUI-25-000093A Assessment of the accompanying documents: EFR-24-003411 rev.2	EFR-26-000207	EFR-2506-0448
<i>Date of issue:</i>	April 14 th 2025 February 25 th 2025	April 16 th 2026	April 16 th , 2026
<i>Date of 1st issue:</i>	-	-	April 17 th 2025
<i>Expiry date:</i>	Valid as long as the product, the test standard and the production process are not modified	Valid up to the issuance of the surveillance inspection report (no later than the expiry date of the Certificate)	April 17 th , 2027

DESCRIPTION OF THE PRODUCT

Single or double leaf doorset with metallic frame.

The detailed description of the doorset and the associated hardware, approved by this certificate, is provided in the classification report referenced EUI-25-000093A:

- Thickness of the leaf(ves): 44 mm
- Door frame in steel profiles 1.5 mm thick
- Option - Vison panel: glazing Firelite 9mm, double glazing Firelite 24 mm
- Option - Louvre: size maximum 508 x 1524 mm (w x h)
- Threshold: 96 mm
- Side and top panels: opaque panel (44 mm or 20 mm thick), glazed panel



Accreditation n° 5-0540
Scope available on
www.cofrac.fr

- Hardware: as described in the classification report referenced EUI-25-000093A
 - Hinges
 - Closers
 - Locks
 - Handles
 - Panic bars
 - Push bars
 - Outside Access Device
 - Cylinders
 - Escutcheons
 - Electric strike
 - Maglock,
 - Rain drip
 - Rain deflector
 - Signage
 - Letter box
 - Door viewer

FIRE RESISTANCE CLASSIFICATION

For all configurations described in the classification report EUI-25-000093A, except the specific configurations listed below – Fire side depending of devices:

E	t
E	120

Single leaf doorset

- With Secury Automatic A2 and Secury Automatic DR (GU) locks

E	W	t
E	-	90

- With DFA 127 (Record) Automatic door operator and sensor:

E	W	t
E	-	90
E	W	60

- Without side and/or top panels, without vision panel and with Secury Automatic A2 and Secury Automatic DR (GU) locks – Leaf maximum size : 858 x 2040 mm (w x h):

E	W	t
E	W	90

- Without side and/or top panels and with vision panel 24mm Firelite glass – Leaf maximum size : 1380 x 2702.5 mm (w x h):

E	W	t
E	-	60
E	W	45

- Without side and/or top panels and with vision panel 9mm Firelite glass – Leaf maximum size : 1008 x 2300 mm (w x h):

E	W	t
E	W	20

Double leaf doorset

- With coordinator G-SR/V:

E	t
E	90

- With vision panel 24mm Firelite glass

E	t
E	60

- Without side and/or top panels, without vision panel and without louvre – Leaf maximum size : (952.5 + 952.5) x 2347 mm (w x h):

E	W	t
E	W	30

PERMISSIBLE DIMENSIONS VARIATIONS OF LEAF

Single leaf doorset

	Minimum	Maximum
Width (mm)	Unlimited	1380
Height (mm)	Unlimited	2702.5
Total surface area of leaf < 3.4 m ²		

Double leaves doorset (dimension of each leaf without the astragal)

	Minimum	Maximum
Width (mm)	Unlimited (*)	1095
Height (mm)	Unlimited	2699
Total surface area of leaf < 2.68 m ²		

(*) for unequal leaves, the minimum authorised width is 450 mm.

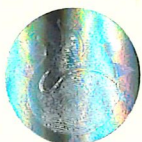
Single leaf unlatched doorset

	Minimum	Maximum
Width (mm)	Unlimited	1159
Height (mm)	Unlimited	2645
Total surface area of leaf < 2.78 m ²		

Double leaves unlatched doorset (dimension of each leaf without the astragal)

	Minimum	Maximum
Width (mm)	Unlimited (*)	1035
Height (mm)	Unlimited	2645
Total surface area of leaf < 2.76 m ²		

(*) for unequal leaves, the minimum authorised width is 450 mm.



PERMISSIBLE DIMENSIONS VARIATIONS OF PANEL

Glazing of Top panel

	Minimum	Maximum
Width (mm)	Unlimited	2490
Height (mm)	Unlimited	604

Glazing of Side panel

	Minimum	Maximum
Width (mm)	Unlimited	710
Height (mm)	Unlimited	2000

Opaque top panel – 44mm thick or 20mm thick

	Minimum	Maximum
Width (mm)	Unlimited	2886
Height (mm)	Unlimited	701
Total surface area of leaf < 1.83 m ²		

Opaque side panel – 44mm thick or 20mm thick

	Minimum	Maximum
Width (mm)	Unlimited	814
Height (mm)	Unlimited	2297
Total surface area of leaf < 1.69m ²		

AUTHORISED SUPPORTING CONSTRUCTION

Normalised high-density rigid construction:
density $\geq 2100 \text{ kg/m}^3$
thickness $\geq 140 \text{ mm}$

Flexible supporting construction as described in §7.2.2.4 of EN 1363-1: 2020 with a fire performances at least equal to those of the door

INSTALLATION & MAINTENANCE

Installation instructions:

- D-73-01 Installation Instructions for internal fire-rated steel door-sets – FIRE DOR FAMILY

Servicing and Maintenance manual:

- D-72-01 Operation-and-maintenance-manual – FIRE DOR FAMILY

Signed by delegation of the Technical Certification Director,

The above certificate is valid only when the product is installed in accordance with the 'product application guideline' (End use). To verify the validity of the product, logon to our website www.efectis.com and type in the COMPLIANCE CERTIFICATE NUMBER.


Yannick LE TALLEC
Certification Director

