

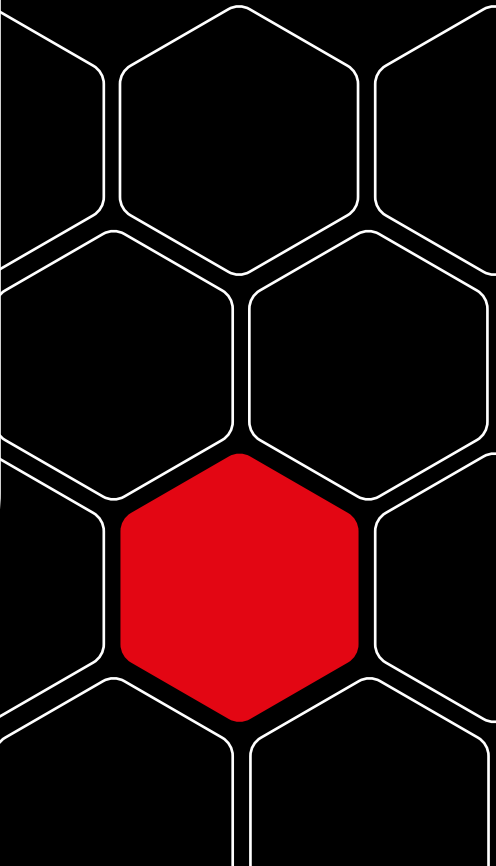



STRONGDOR



Fire*dor*[®]

FIRE-RATED STEEL DOORS





Unique Features

- 10-12 DAY LEAD TIME* UP TO 2.76M HIGH
- AVAILABLE AS PAS 24:2022
- FIRE-RATED UP TO E120

* Subject to manufacturing and stock availability.



Internal Fire Rated Steel Door-Sets

Firedor Internal is fire-rated up to E120 and Efectis Certified. Each is built to order, individually constructed with a choice of hardware, frame, threshold and panel options. Comprising of 1.2mm steel sheets, the leaf skins are mechanically interlocked and internally bonded, proving greater stability and protection against delamination.



150 RAL
COLOURS
AS STANDARD

Leaf

44mm door leaf thickness incorporating an integrated astragal for added security. Comprising of 1.2mm steel sheets, the leaf skins are mechanically interlocked and internally bonded, proving greater stability and protection against delamination.

Frames

Manufactured from lightweight, 1.2mm thick steel. Adjust 2-Fit side expander system that offers up to 12mm expansion to the structural opening.

Thresholds

All thresholds are Part M compliant, with AM3 and AM5 weather thresholds and double ramped industrial plate available upon request. Firedors can be supplied with or without a threshold.

Security Rating

Available with PAS 24:2022 security rating.

Acoustic Rating

Up to 36dB rating.

Finish

Supplied inclusive of a powder coated finish in a standard colour. Full range of RAL and BS colours available.

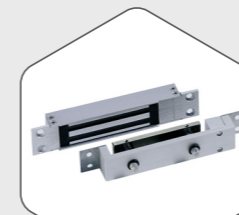
Structural Opening	Single Door	Double Door
Width	Up to 1400mm	Up to 2300mm
Height	Up to 2762mm	Up to 2760mm
Max Leaf Area	3.4 m2 per leaf	2.68 m2 per leaf
Integrity	E120	E120
Radiations	EW90 (Up to W: 965mm x H:2040mm)	EW30 (Up to W: 1060mm x H:2437mm)

Top and side panel sizes

Structural Opening	Glazed Top Lights	Glazed Side Lights	Solid Top Panels	Solid Side Panels
Width	Up to 2581mm	Up to 790mm	Up to 2887mm	Up to 815mm
Height	Up to 695mm	Up to 2090mm	Up to 701mm	Up to 2298mm



Striking Hardware Options



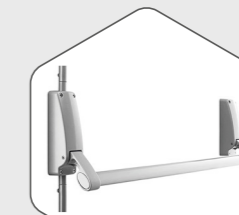
Dormakaba Maglock

Dormakaba EM7500-D shear maglocks offer a secure access control solution on fire-rated doors.



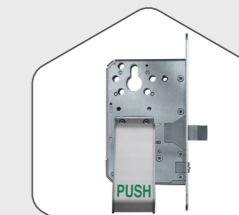
Assa Abloy EL560 / EL532

Assa Abloy EL560 / EL532 locks offer high security, fire-rated, access control and locking solutions.



Briton Panic

A durable and affordable range of Briton panic hardware and mortice latch locks.



Mico Modula

Mico Modula Panic Hardware with electromechanical, auto or manual deadlocking options



External Fire Rated Steel Door-Sets

FireDor External is fire-rated up to E120 and CE marked to BS EN 14351-1 and BS EN 16034. Each is built to order, individually constructed with a choice of hardware, frame, threshold and panel options. Comprising of 1.2mm steel sheets, the leaf skins are mechanically interlocked and internally bonded, proving greater stability and protection against delamination.

Unique Features

- 10-12 DAY LEAD TIME*
UP TO 2.76M HIGH
- AVAILABLE AS PAS 24:2022
- FIRE-RATED UP TO E120
AND CE MARKED

* Subject to manufacturing and stock availability.

Leaf

44mm door leaf thickness incorporating an integrated astragal for added security. Comprising of 1.2mm steel sheets, the leaf skins are mechanically interlocked and internally bonded, proving greater stability and protection against delamination.

Frames

Manufactured from lightweight, 1.2mm thick steel. Adjust 2-Fit side expander system that offers up to 12mm expansion to the structural opening.

Thresholds

All thresholds are Part M compliant, with AM3 and AM5 weather thresholds and double ramped industrial plate available upon request. Firedors can be supplied with or without a threshold.

Security Rating

Available with PAS 24:2022 security rating.

Acoustic Rating

Up to 36dB rating.

Finish

Supplied inclusive of a powder coated finish in a standard colour. Full range of RAL and BS colours available.

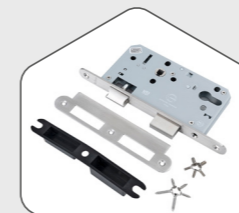
Structural Opening	Single Door	Double Door
Width	Up to 1400mm	Up to 2300mm
Height	Up to 2762mm	Up to 2760mm
Max Leaf Area	3.4 m2 per leaf	2.68 m2 per leaf
Integrity	E120	E120
Radiations	EW90 (Up to W: 965mm x H:2040mm)	EW30 (Up to W: 1060mm x H:2437mm)

Top and side panel sizes

Structural Opening	Glazed Top Lights	Glazed Side Lights	Solid Top Panels	Solid Side Panels
Width	Up to 2581mm	Up to 790mm	Up to 2887mm	Up to 815mm
Height	Up to 695mm	Up to 2090mm	Up to 701mm	Up to 2298mm

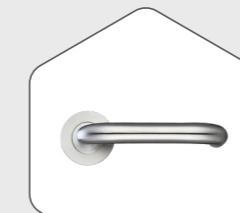


Striking Hardware Options



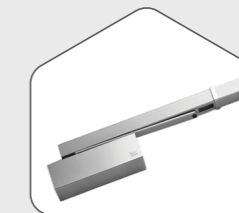
Briton 5720 Sashlock

A heavy-duty euro profile cylinder sashlock for lockable doors with lever handles.



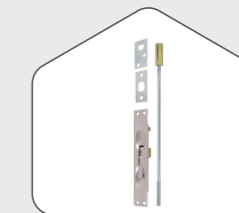
Lever Handle

Concealed fix press lever handle available in 19mm diameter.



TS93 Door Closer

High-quality finish closer with concealed fixings creating an elegant and effortless appearance.



Manual Flush Bolt

The manual flush bolt is designed to secure the inactive leaf on a double door.

Fire^{dor} Thermal

Leaf

44mm door leaf thickness incorporating an integrated astragal for added security. Comprising of 1.2mm steel sheets, the leaf skins are mechanically interlocked and internally bonded, providing greater stability and protection against delamination.

Frame

Adjust 2-Fit side expander system that offers up to 12mm expansion to the structural opening.

Threshold

Three options of Part M compliant thresholds are available:

- Stormguard 96mm industrial threshold
- Stormguard AM3 and AM5 for weather-rated doors.

Hardware

Available with a range of panic exit locks, emergency exit locks or personnel locks.

Access control option is also available.

Acoustic Rating

Upgrade for up to 40dB acoustic rating.

Finish

Available with a plain leaf style or traditional tongue and groove to enhance the appearance of the door and help it to blend into its surroundings as a residential style door-set.



- IMPRESSIVELY LOW 1.5 W/M2K
- AVAILABLE WITH PAS 24:2022 SECURITY RATING

44mm Door Leaf Thickness	U-value as low as
Single Door	1.6 W/m ² K
Double Door	1.5 W/m ² K

	Single Door	Double Door
Width	Up to 1266mm	Up to 2300mm
Height	Up to 2762mm	Up to 2762mm
Max Leaf Area	2.584 m ² per leaf	2.67 m ² per leaf
Integrity	E120	E60
Insulation	EI20	EI20

*Depending on specification, some thermally-rated fire doors are rated from both sides and some are only rated when fire is opposite the hinge side. Please check with our team of steel door experts from more information.

Fire^{dor} Latchless

Leaf

44mm door leaf thickness incorporating an integrated astragal for added security. Comprising of 1.2mm steel sheets, the leaf skins are mechanically interlocked and internally bonded, providing greater stability and protection against delamination.

Frame

Adjust 2-Fit side expander system that offers up to 12mm expansion to the structural opening.

Threshold

Industrial Door Threshold - 96mm. AM3 and AM5 versions available for inward and outward opening doors respectively for when extra weatherproofing is required. Alternatively, no threshold can be fitted. For riser applications a 4 sided frame can be fitted.

Hardware

Available with pull handles, push plates, signage, kick plates and any closer is possible.

Electric Locking

Access control options available include the Trimec V-Lock or Dorma EM7500-D shearlock fitted to the upper or lower half of the door leaf. These are fire-rated up to E60/EW30.

Finish

Available with a plain leaf style or traditional tongue and groove to enhance the appearance of the door and help it to blend into its surroundings as a residential style door-set.

	Single Door	Double Door
Width	Up to 1358mm	Up to 2180mm
Height	Up to 2705mm	Up to 2705mm
Max Leaf Area	2.78 m ² per leaf	2.48 m ² per leaf
Integrity	E120	E90
Insulation	EW20	EW20

Upgrades

Louvre and vision panels up to 1524mm high.



Fire *dor* Smoke

Leaf

44mm door leaf thickness incorporating an integrated astragal for added security. Comprising of 1.2mm steel sheets, the leaf skins are mechanically interlocked and internally bonded, providing greater stability and protection against delamination.

Frame

Adjust 2-Fit side expander system that offers up to 12mm expansion to the structural opening.

Threshold

Firedor Smoke is supplied with a 96mm threshold as standard. It can also be supplied with an AM3 or AM5 threshold option.

Alternatively, it can be supplied with no threshold when fitted with a drop seal.

Hardware

Available with mortice locks, lever handles, fire-rated closers, panic devices and flush bolts on the inactive leaf on double doors.

Upgrades

Available with PAS 24:2022 security rating. Full range on vision panels available with single and double glazed glazing

Finish

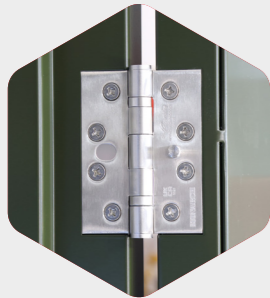
Available with a plain leaf style or traditional tongue and groove to enhance the appearance of the door and help it to blend into its surroundings as a residential style door-set.

	Single Door	Double Door
Width	Up to 1400mm	Up to 2300mm
Height	Up to 2762mm	Up to 2760mm
Max Leaf Area	2.56 m2 per leaf	2.68 m2 per leaf
Integrity	E120	E120
Radiations	EW90 (Up to W:965mm x H:2040mm)	EW30 (Up to W:1060mm x H:2437mm)



Firedor Smoke is fire-rated up to E120 and has been tested to BS EN 1634-1:2014 + A1:2018. Additionally, it has undergone further testing to BS EN 1634-3:2004 + AC:2006, earning up to E120 Sa4 classification, which signifies compliance with the ambient smoke performance standard.

DOOR USP'S.



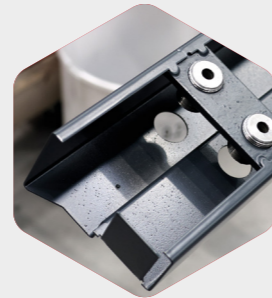
Dog Bolt Hinges

All our hinges are dog bolt as standard. This design ensures that even if someone cuts off the hinge barrel from the outside during an attack, the door remains securely in place and cannot be pushed out of its frame. The dog bolt provides this added security, significantly enhancing the door's overall protection.



Expandable Sides

This feature ensures a tidy and neat fit, allowing for a secure installation even if the opening is not perfectly square. The sides can be adjusted up to 12mm at each side as needed, providing flexibility for an accurate fit.



6mm Welded Plate for Jacking Screws

Our 6mm welded plate significantly enhances both strength and security, providing formidable protection against even the most determined attempts at forced entry. This heavy-duty construction ensures long-lasting durability, making our steel doors a top choice for high-security applications.



Mechanical Interlock

Our mechanical interlock is integrated into all our doors and significantly enhances their strength. This feature creates an exceptionally sturdy door leaf that resists bending and flexing, ensuring durability and reliability.



Fixing Kit

All our doors are supplied with a bespoke fixing kit, complete with a full-length metal hex bar, extra caps and a new drill bit. This comprehensive kit, available in 4 options of masonry, brick, timber and steel, provides everything you need for a simple install on site.



Glue and Unbacked Honeycomb

Our cardboard honeycomb core is an open construction, allowing the glue to expand and fill the hexagonal cells through the whole door. This results in the two leaf skins being bonded at multiple points, significantly reducing the risk of separation and delamination.



Visit for your in-depth technical specification sheets about our door-sets and hardware options.

With further content such as fitting videos, installation and maintenance guides, there is a helpful guide for any situation.



"Let Strongdor be your competitive advantage"



STRONGDOR

HEAD OFFICE


Unit 3, Northgate Business Park,
White Lund Industrial Estate,
Morecambe, LA3 3BJ

FACTORY

Unit 4 Southgate,
White Lund Industrial Estate
Morecambe, LA3 3PB

INNOVATION CENTRE

Unit 10, Oakwood Way,
Carnforth Business Park
Carnforth, LA5 9FD

 01524 727000

 www.strongdor.com