

Sashlock Options

HARDWARE OPTIONS

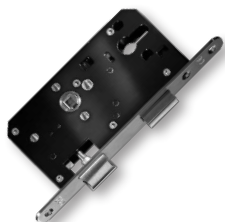
TECHNICAL
SPECIFICATIONS





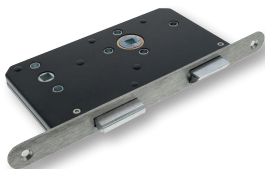
Dorma 388 CE Deadlock 20 mm SSS Radius strikeplate

The Dorma 388 CE deadlock is suitable for use on doors without lever furniture that need to be locked. The deadbolt can be operated from one side or both, depending on the cylinder selected. Approved for fire-rated doors with CE certificate and classification EN 12209.



Dorma 381 CE Sashlock 20 mm SSS *RADIUS*

The Dorma 381 CE sashlock is suitable for use on doors with lever furniture to withdraw the latch bolt, the deadbolt can be operated from one side or both as required depending on the type of cylinder. With universal handing, this sash lock is CE marked, certified to EN 12209 and approved for fire-rated doors.



Briton 5530 Bathroom Lock*

Used for privacy by occupant to lock bathroom door with a deadbolt operated by thumbturn on the inside, and an indicator/emergency release on the outside. Latch normally operated by lever handles.



Briton 5540 Mortice Latch*

Designed for doors with lever furniture that do not need to be locked.



Briton 5550 Euro Profile Cylinder Nightlatch*

Night latches lock the door once it has closed without the use of a key. The key is used to unlock the door to get back in. It enables exit from a building using only the lever door handle, without compromising security.



Briton 5555 Euro Profile Cylinder Nightlatch*

As Briton 5550 above, with the lever on the inside only to retract the latchbolt. Single cylinder on the outside operates the latchbolt with a single key turn.

*Standard lock case features:

- 3 EN 12209 and CE Marked
- 3 EN 1634 fire testing for 4 hour steel fire doors
- 3 Certified Approved CF741



Briton 5660 Escape Sashlock with split follower function

Key features: Lever handle both sides. For use by trained staff only (not general public). Each side works independently. Deadlocks at night. Has to be CE marked for external fire exits.

Escape lock with split follower - Latchbolt withdrawn by lever handle from both sides. Split follower function enables both the deadbolt and latchbolt to be withdrawn simultaneously by inside lever handle. Easily reversible escape mechanism.

- 3 EN 12209 and CE Marked
- 3 EN 1634 fire testing for 4 hour steel fire doors

PLEASE NOTE:

For EN 179 compliance, the lock must be fitted with compatible lever furniture (See CE certification for further details).