



Thermally Rated Steel Door-Sets

- EMERGENCY EXIT
- PERSONNEL DOORS

SUITABLE FOR INTERNAL
AND EXTERNAL USE

UNIQUE FEATURES

10-12 day lead time*

Up to 2.96m high

U-value as low as 1.5 W/m²K

Available as PAS 24:2022

*Subject to manufacturing and stock availability



Steeldor Thermal was developed to comply with door efficiency targets stipulated by the government in Part L of the updated Building Regulations. The leaf has an insulated, internal Rockwool core enabling it to achieve a U-value as low as 1.5 W/m²K, compliant with the guidance in England.



Typical **Steeldor** thermal door set specification

Leaf

44mm door leaf thickness, fitted with an integrated astragal for added security. Comprising of 2 x 1.2mm Galvannealed steel sheets, the leaf is internally bonded with a dutch fold stitch welded system providing greater stability and protection against de-lamination.

Frames

Manufactured from lightweight, 1.2mm thick Galvannealed steel.

Adjust 2-Fit side expander system that offers up to 12mm expansion to the structural opening.
(See Figs. 1, 2, & 3)

Thermal Transmittance

U-value as low as 1.6W/m²K for single door-sets and 1.5W/m²K for double door-sets.

Door ironmongery

BS 7352 Grade 13 stainless steel, twin bearing template drilled butt hinges with integral high-security dog bolts are fitted as standard with CE marking. Other hardware on request.

Industrial Door Threshold - 96mm

Standard aluminium threshold is Part M compliant and fitted with a neoprene seal for outward opening door-sets. AM3 inward opening and AM5 outward opening thresholds available on request.

Finish

Supplied inclusive of a powder-coated finish in a standard colour. Full range of RAL and BS colours available.

Acoustic Rating

Up to 39dB rating.

Options and upgrades

Available as PAS 24:2022.

Earth Bonding Upgrade

Boost safety and meet industry standards with our new Earth Bonding upgrade. This feature enhances protection by providing a secure grounding point, offering peace of mind in environments where electrical safety is critical.

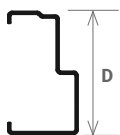
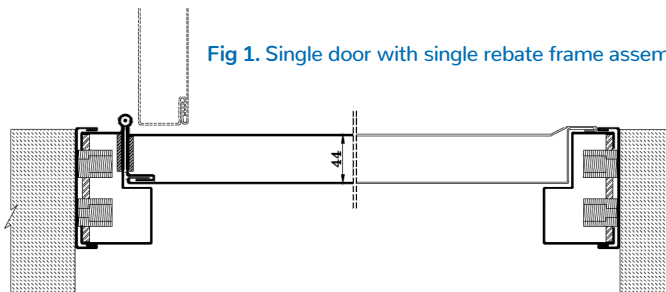
Structural Opening	Single Door	Double Door
Width	Up to 1400mm	Up to 2700mm
Height	Up to 2960mm	Up to 2960mm



**AVAILABLE WITH
FIRE RATING!***

UPGRADE TO
39dB
RATING*

Fig 1. Single door with single rebate frame assembly



Size	Depth (D)
Min	80 mm
Max	104 mm

Fig 2. Single rebate frame assembly

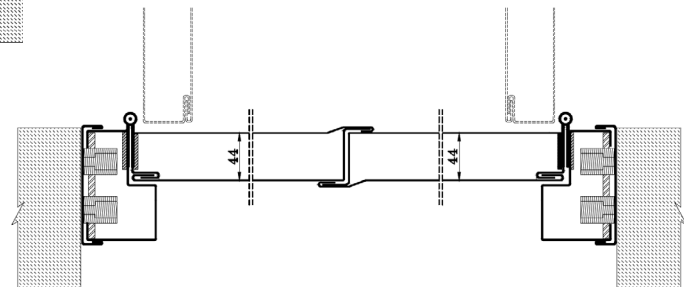


Fig 3. Double door with single rebate frame assembly