



Door pictured is
inward opening

Climador®

Thermal and Fire Rated Steel Door

- EMERGENCY EXITS
- PERSONNEL DOORS

SUITABLE FOR INTERNAL
AND EXTERNAL USE

UNIQUE FEATURES

Fire resistant / Non fire rated

1.4 W/m²K U-Value single doors

Up to 2.5m high

1 year warranty



Climador has an exceptionally low U-Value of up to 1.4 W/m²K and has been added to the Strongdor range to address the growing demand for thermally proficient, insulated steel doors. Made from galvanised sheet steel, Climador comes in double or single leaf configuration and is ideally suited to internal or external applications for commercial, industrial, public or residential projects.



Climador can be fire-rated for external use and CE marked to EN16034 & EN14351-1

Climador seamless steel doors can be thermally-rated and fire-rated and available as single or double-leaf door-sets for internal or external use in commercial, industrial, residential or hospital applications. Glazed leaves are available as an option and door can be supplied with or without a threshold.

Climador features:

- ✓ Galvanized steel sheet door leaf with polyester or powder coating - thickness 0.8 - 1.5mm
- ✓ Leaf thickness 64mm
- ✓ External and fire-rated 64mm
- ✓ Door frame made from powder coated steel sections - thickness 2.0mm
- ✓ Stainless steel handle
- ✓ Mortice lock
- ✓ Choice of RAL colours
- ✓ Two hinges as standard
- ✓ Fitted with door sill and drip cap (for external doors) as standard

DECLARED PERFORMANCE

ESSENTIAL CHARACTERISTIC	TECHNICAL SPECIFICATION	PERFORMANCE (NO FIRE RATING)
Water tightness	PN-EN 1027:2001	class 4B
Resistance to wind load P1, P2	PN-EN 12211:2001	class 4B
Resistance to wind load	P3 PN-EN 12211:2001	class C3
Thermal resistance single door	PN-EN ISO 10077-1:2007	1,4 [W/m2K]
Thermal resistance double door	PN-EN ISO 10077-1:2007	1,7 [W/m2K]
Air permeability	PN-EN 1026:2011	class 1

THERMAL INSULATION PROPERTIES - SINGLE DOOR	$U_D = 1.4 / (m^2.K)$
THERMAL INSULATION PROPERTIES - DOUBLE DOOR	$U_D = 1.7 / (m^2.K)$

Fig. 1 Cross-section of fire-rated single door with corner frame

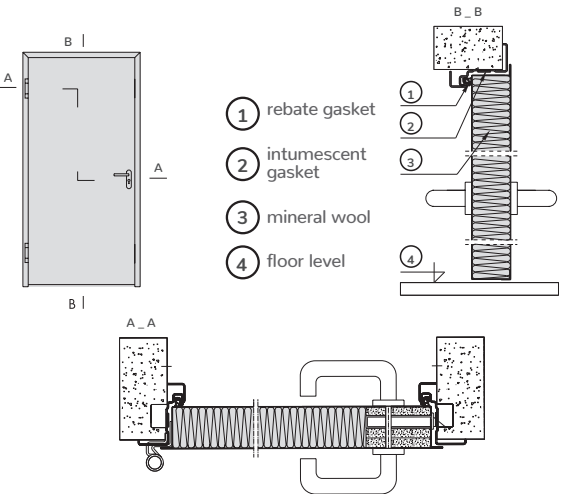
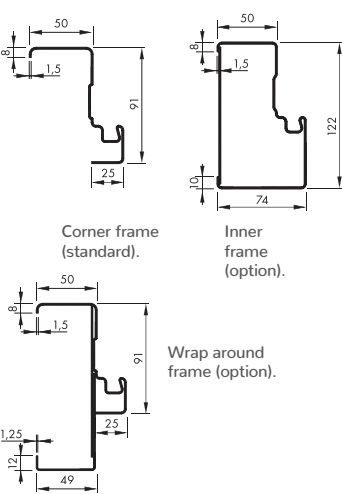


Fig. 2 Frame options



Single door	Size range
Width	Up to 1.3m
Height	Up to 2.5m

Double door	Size range
Width	Up to 2.6m
Height	Up to 2.5m

Installation

As a product from our bespoke line, Climador frames are not adjustable or supplied with expander sides and the hardware is not pre-fitted, it is advised that the installation is carried out by an experienced steel door fitter.