



FireDor®

Thermal and Fire Rated Steel Door

- EMERGENCY EXITS
- PERSONNEL DOORS

SUITABLE FOR INTERNAL
AND EXTERNAL USE

UNIQUE FEATURES

10-12 day lead time*

Up to 2.762m high

U-value as low as 1.5 W/m²K

Fire-rated up to E60 and UKCA | CE

*Subject to manufacturing and stock availability



Firedor Thermal has an exceptionally low U-Value as low as 1.5 W/m²K and has been added to the Strongdor range to address the growing demand for thermally proficient, insulated, fire rated steel doors. Comprising of 1.2mm 'Rustec' steel sheets, the leaf skins are mechanically interlocked and internally bonded, proving greater stability and protection against de-lamination.

150 RAL
COLOURS
AS STANDARD



Typical **Firedor** thermal door-set specification

Leaf

44mm door leaf thickness incorporating an integrated astragal for added security. Comprising of 1.2mm 'Rustec' steel sheets, the leaf skins are mechanically interlocked and internally bonded, proving greater stability and protection against de-lamination.

Insulated core as low as 1.5 U-value.

Frames

Manufactured from lightweight, high tensile 1.5 mm thick 'Rustec' steel.

Adjust 2-Fit side expander system that offers up to 12mm expansion to the structural opening.

Hardware

Mico Modular or MSR available in personnel or panic options.

Fire tested both sides, except a single 2-point panic.

Industrial Door Threshold - 96mm

Standard aluminium threshold is Part M compliant and fitted with a neoprene seal for outward opening door-sets. AM3 inward opening and AM5 outward opening thresholds available on request.

Finish

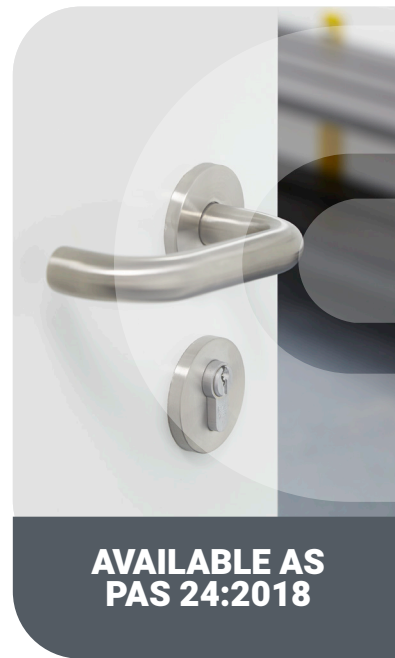
Supplied inclusive of a powder coated finish in a standard colour. Full range of RAL and BS colours available.

Fire Rating

Fire-rated up to E60 and UKCA | CE marked to BS EN 14351-1 and EN 16034 standards.

Acoustic Rating

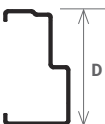
Up to 36dB rating.



**AVAILABLE AS
PAS 24:2018**

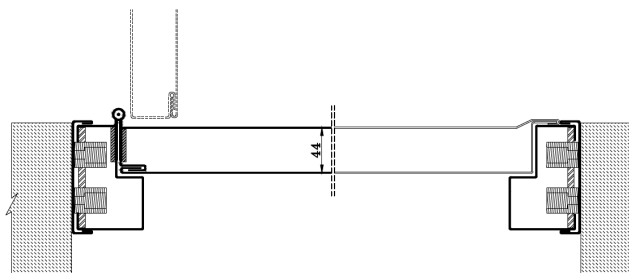
	Single Door	Double Door
Width	Up to 1266mm	Up to 2300mm
Height	Up to 2762mm	Up to 2762mm
Max Leaf Area	2.584 m2 per leaf	2.67 m2 per leaf
Integrity	E60	E45
Insulation	El230	El220 El230 (Up to W:1032 x H:2410)

44mm Door Leaf Thickness	U-value as low as
Single Door	1.6 W/m2K
Double Door	1.5 W/m2k

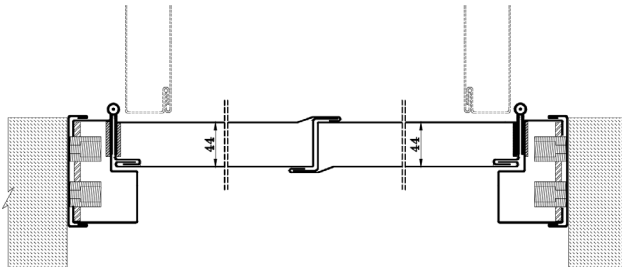


Size	Depth (D)
Min	80 mm
Max	140 mm

Single rebate frame assembly



Single door with single rebate frame assembly



Double door with single rebate frame assembly