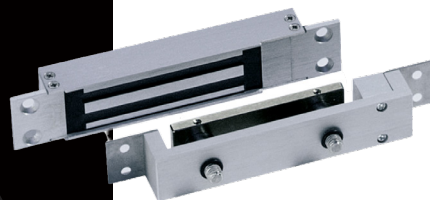


# Magnetic Locking Options

## HARDWARE OPTIONS

TECHNICAL SPECIFICATIONS



### Electro Magnetic 7500-D Shear Lock - Monitored

Dormakaba shear maglock offers a secure access control solution. Available within our firedor range, the 7500-D maglock is a 12VDC / 24VDC mortise-mounted magnet.

#### Features

- For external applications
- Fire rated
- Water protected stainless steel constructions
- Holding force 7500 N
- Fail safe operation principle
- For extra security, up to 3 maglock's in the leaf of the leading edge of the door can be supplied. In addition to this the 7500-D maglock can be installed within the header of both the active and inactive leaf of a double door. This provides security for double doors, even when the inactive leaf is not bolted.



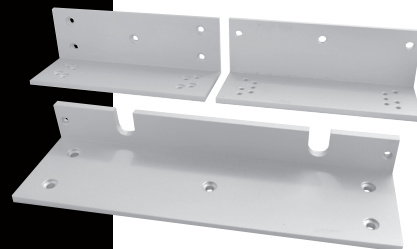
### ICS A-Series 12/24VDC Standard Surface Magnet - Monitored

### ICS A-Series 12/24VDC Standard Surface Magnet - Non Monitored

This 12VDC / 24VDC is single surface mounted and has a holding force of 545kg (1200lbs).

#### Features

- Satin anodised aluminium finish
- Outward opening
- Humidity 0 - 95% non-condensing
- Operating temperature between 10 & 55 degrees celcius



### AS8524 - Mounting bracket for inward opening maglock

Required with a minute 30mm header extension to fit maglock to inward opening doors.

#### Features

- Suitable for inward opening applications giving multiple options for fitting.





### CDVI CSL-30 Magnetic Shearlock - Monitored

This 12VDC / 24VDC magnetic shearlock is monitored as standard and is provided as fail safe.

#### Features

- Fail safe
- 1500kg holding force
- Monitored as standard
- Flush (mortice) mounted
- Self-aligning technology
- Can be run off 12V or 24V
- Non fire-rated

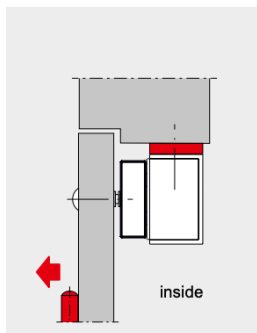


### Dorma EM1800 AH Maglock

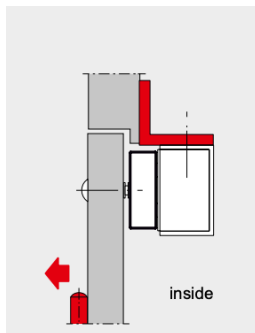
Introducing the EM 1800 AH, Dorma's advanced surface-mounted maglock.

#### Features

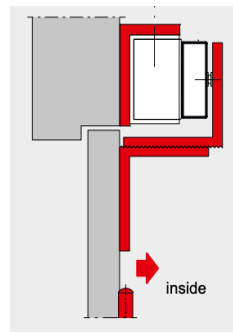
- Fail safe
- 1800 N holding force
- Operational temperature -40 to 60 degrees
- Surface mounted
- Does not require any change in the header profile



Outward Opening: Packer Plate



50mm Frame Outward: L-Bracket



Inward Opening: Z & L Brackets