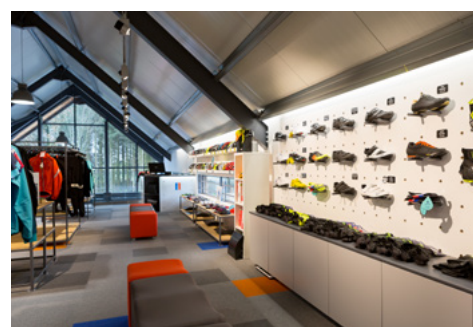


BIKETREKS INGS

STEEL SECURITY DOOR

**CASE
STUDY**

STRONGDOR
SECURED BY *steel*
A GROUP COMPANY
HAWOODS



STEELDOR RETAIL APPLICATION

BIKETREKS INGS

STEEL SECURITY DOOR



Thanks to businessman Simon Hockings, there has been a significant change to the menu at the former Little Chef site on the A591 between Kendal and Windermere.

Transformed from Heston's troubled grub outlet to tasteful coffee

shop and bespoke purveyor of some seriously exclusive road bikes, Biketreks at Ings has already become a popular destination for cycling enthusiasts.

With the original Biketreks shop in Ambleside now concentrating on

mountain bikes, the new store boasts names such as Specialized, Scott and award winning German maker Storck. It is also one of the few stockists of high-end, specialist race-engineered cycles by S-Works.

The store itself has a light, contemporary look and feel, with a huge expanse of glass and polished concrete floor. It was designed to feature the bikes at their very best, using gallery-like white walls and a floating staircase to add to the refined ambience.

Specified by the Architect, Steeldor performs a less glamorous but equally essential role in the new build. Used to the rear of the building the double fire exit and single personnel doors give staff and stock access, while protecting the precious bikes from would be thieves.

Surrounded by the stunning scenery, Simon hopes that the South Lakes will become the cycling capital of the North, Biketreks is definitely a step in the right direction.

