

## THE CERTIFICATE OF APPROVAL VALIDATES AS FOLLOW:

Product	Fire rated pedestrian doorset
Reference of the product	FIRECOR Insulated 44 mm
placed on the market by	<b>Strongdor Ltd</b> Carnforth Business Park - Oakwood Way Carnforth - LA5 9FD, United Kingdom
produced in the manufacturing plant located in	<b>Morecambe, United Kingdom</b>

In compliance with the Efectis Certification Rules **DAP 21 REV. N**, this certificate of approval attests that:

- the doorset is submitted by the manufacturer to a factory production control,
- the accredited laboratory EFECTIS UK/Ireland has performed the initial type-testing for the relevant characteristics of the doorset
- the accredited inspection body EFECTIS France has performed the initial inspection of the factory and of the factory production control and performs the continuous surveillance, assessment and approval of factory production control
- the accredited inspection body EFECTIS France has performed the assessment of the accompanying documents, in accordance to the level of certification no 2 defined in the Efectis Certification rules DAP 21

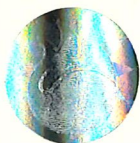
	<b>ASSOCIATED DOCUMENTS</b>	<b>INSPECTION REPORT</b>	<b>CERTIFICATE OF APPROVAL</b>
<i>Number:</i>	Classification report: EUI-25-000093B Assessment of the accompanying documents: EFR-24-003411 rev.2	EFR-26-000207	<b>EFR-2506-0447</b>
<i>Date of issue:</i>	April 15 <sup>th</sup> 2025 February 25 <sup>th</sup> 2025	April 16 <sup>th</sup> 2026	April 16 <sup>th</sup> , 2026
<i>Date of 1<sup>st</sup> issue:</i>	-	-	April 17 <sup>th</sup> 2025
<i>Expiry date:</i>	Valid as long as the product, the test standard and the production process are not modified	Valid up to the issuance of the surveillance inspection report (no later than the expiry date of the Certificate)	April 17 <sup>th</sup> , 2027

## DESCRIPTION OF THE PRODUCT

Single or double leaf doorset with metallic frame.

The detailed description of the doorset and the associated hardware, approved by this certificate, is provided in the classification report referenced EUI-25-000093B:

- Thickness of the leaf(ves): 44 mm
- Door frame in steel profiles 1.5 mm thick
- Side and top panels: 44 mm thick
- Option - Vision panel: 25 mm thick



Accreditation n° 6-0540  
Scope available on  
[www.cofrac.fr](http://www.cofrac.fr)

- Hardware: as described in the classification report referenced EUI-25-000093B
  - Hinges
  - Closers
  - Locks
  - Handles
  - Panic bars
  - Push pads
  - Outside Access Device
  - Cylinder
  - Escutcheons
  - Maglock
  - Rain drip
  - Rain deflector
  - Signage

## FIRE RESISTANCE CLASSIFICATION

### Single leaf doorset

- Without the PHA2000 (Dormakaba) 3-points panic bar and with Modula's range mortice lock (Mico) or with Thermal pins TV2003-50 (Dictator) – Indifferent fire side:

E	Category A			Category B		
	l	W	t	l	W	t
E	-	-	60	-	-	60
E	-	W	60	-	W	60
E	l <sub>2</sub>	-	20	l <sub>2</sub>	-	15

- With the PHA2000 (Dormakaba) 3-points panic bar and with components as listed in the classification report EUI-25-000093B – Fire opposite to hinges side only:

E	Category A		
	l	W	t
E	-	-	120

### Double leaf doorset

- Option 1 with components as defined in classification report EUI-25-000093B – Indifferent fire side:

E	Category A			Category B		
	l	W	t	l	W	t
E	-	-	45	-	-	45
E	-	W	45	-	W	45
E	l <sub>2</sub>	-	30	l <sub>2</sub>	-	20

Option 2 with components as defined in classification report EUI-25-000093B, and without outside Access device 1413.LE.SE (Briton) – Indifferent fire side:

E	Category A		
	l	W	t
E	-	-	30
E	-	W	30

- Option 2 with components as defined in classification report EUI-25-000093B, with outside Access device 1413.LE.SE (Briton) – Indifferent fire side:

Category A			
E	l	W	t
E	l <sub>2</sub>	W	20

- Option 2 with components as defined in classification report EUI-25-000093B – Fire opposite to hinges side only:

Category A			Category B			
E	l	W	t	l	W	t
E	-	-	60	-	-	60
E	-	W	60	-	W	60
E	l <sub>2</sub>	-	20	l <sub>2</sub>	-	15

- Option 3 with components as defined in classification report EUI-25-000093B – Indifferent fire side:

Category A			Category B			
E	l	W	t	l	W	t
E	-	-	60	-	-	45
E	-	W	60	-	W	45
E	l <sub>2</sub>	-	20	l <sub>2</sub>	-	15

- Option 4 with components as defined in classification report EUI-25-000093B – Indifferent fire side:

Category A			Category B			
E	l	W	t	l	W	t
E	-	-	60	-	-	45
E	-	W	60	-	W	45
E	l <sub>2</sub>	-	20	l <sub>2</sub>	-	15

## PERMISSIBLE DIMENSIONS VARIATIONS OF LEAF

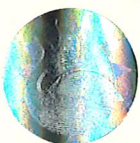
### Single leaf doorset

	Category A		Category B	
	Minimum	Maximum	Minimum	Maximum
Width (mm)	504	1008	504	1159
Height (mm)	1755	2340	1755	2691
Total surface area of leaf < 2.83 m <sup>2</sup>				

### Double leaves doorset (dimension of each leaf without the astragal)

- Option 1 with Mico lock and Thermal pins:

	Category A		Category B	
	Minimum	Maximum	Minimum	Maximum
Width (mm)	476	952	476	1095
Height (mm)	1755	2340	1755	2702
Total surface area of leaf < 2.68 m <sup>2</sup>				



Accreditation n° 5-0540  
Scope available on  
www.cofrac.fr

- Option 2 with Briton mortice lock and 2 Thermal pins:

	Category A		Category B	
	Minimum	Maximum	Minimum	Maximum
Width (mm)	500	1000	500	1150
Height (mm)	1755	2340	1755	2691
Total surface area of leaf < 2.8 m <sup>2</sup>				

- Option 3 with any listed mortice lock and Thermal pins:

	Category A		Category B	
	Minimum	Maximum	Minimum	Maximum
Width (mm)	475	950	475	1092
Height (mm)	1601	2135	1601	2455
Total surface area of leaf < 2.45 m <sup>2</sup>				

- Option 4 with Dormakaba 5-points panic bar:

	Category A		Category B	
	Minimum	Maximum	Minimum	Maximum
Width (mm)	462	852	462	979
Height (mm)	1530	2040	1530	2346
Total surface area of leaf < 2.085 m <sup>2</sup>				

## PERMISSIBLE DIMENSIONS VARIATIONS OF PANEL

### Top panel

	Minimum	Maximum
Width (mm)	1292	2972
Height (mm)	525	805
Total surface area of leaf < 2.17 m <sup>2</sup>		

### Side panel

	Minimum	Maximum
Width (mm)	391	903
Height (mm)	1567	2403
Total surface area of leaf < 1.97 m <sup>2</sup>		

## AUTHORISED SUPPORTING CONSTRUCTION

Normalised high-density rigid construction:  
 density  $\geq 2100 \text{ kg/m}^3$   
 thickness  $\geq 140 \text{ mm}$

**INSTALLATION & MAINTENANCE**

---

**Installation instructions:**

- D-73-01 Installation Instructions for internal fire-rated steel door-sets – FIREBOR FAMILY

**Servicing and Maintenance manual:**

- D-72-01 Operation-and-maintenance-manual – FIREBOR FAMILY

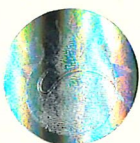
Signed by delegation of the Technical Certification Director,

Yannick LE TALLEC  
Certification Director



*The above certificate is valid only when the product is installed in accordance with the 'product application guideline' (End use). To verify the validity of the product, logon to our website [www.efectis.com](http://www.efectis.com) and type in the COMPLIANCE CERTIFICATE NUMBER.*

*Efectis certified*



Accreditation n° 6-0540  
Scope available on  
[www.cofrac.fr](http://www.cofrac.fr)