

**TECHNICAL SPECIFICATIONS**

# FIXED PRICE STEEL DOORS



## TECHNICAL SPECIFICATIONS

# FIXED PRICE STEEL DOORS



### LEAF

45mm thick Door leaf with flush lipped astragal constructed from:  
2 x 1.2mm thick 'Rustec' sheets, which are Dutch folded and internally bonded together.

42mm thick 'Hexatex' core.

3 year warranty against rust as standard for all colour coated doors.

### WEIGHT

31kg/m<sup>2</sup> with Honeycomb core

### FRAME

Manufactured from 1.6 mm thick 'Rustec' steel.

Single rebate 104mm wide frame with additional rebate for flush lip.

A minimum of six fully adjustable fixing points are provided to each jamb.

Unique 'Adjust-2-fit' side channels with each frame.

3 year warranty against rust as standard for all colour coated doors.

### DOOR IRONMONGERY

BS 7352 Grade 13 stainless steel, twin bearing template drilled butt hinges with integral high security dog bolts are fitted as standard with CE marking.

For security most doorsets in the range are tested to PAS 24. For air permeability, the standard is BS EN1026:2000 and was passed class 4 – 600Pa (113kmh) test pressure. For weather-tightness, the standard is BS 6375: Part 1: 2009 (test to BS EN1026:2000, BS EN1027:2000, BS EN12211:2000) and Steeldor passed the 1200 exposure rating. For water-tightness, the standard BS EN1027:2000 was passed 150Pa for outward opening and 100Pa for inward opening. For wind load the BS EN12211:2000 standard was passed 1200Pa (Class A3) 98 mph.

### VISION PANELS (Optional)

Single glazed.

6mm GWPP/ 6.4mm Laminated / 6mm Toughened / 9mm Ceramic.

### LOUVRES (Optional)

18GA Galvanised Steel – frame.

22GA Galvanised Steel – louvre blades.

50% Free air flow in standard configuration.

### FINISH

Comes as standard in a powder coated finish in one of our standard colours.

Full range of RAL and BS colours available.

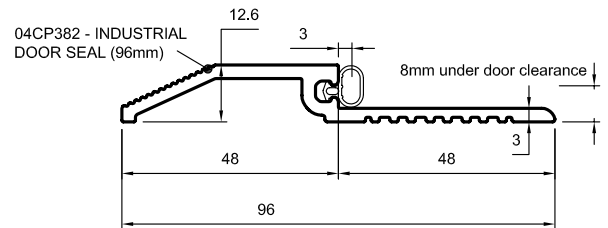
### THRESHOLD

Aluminium threshold with neoprene seal on external outward opening doors.

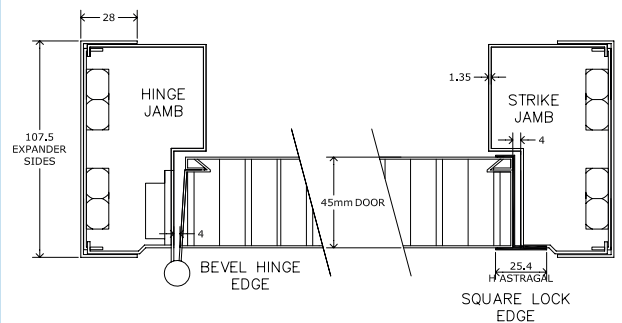
### SEALS

Strongdor self adhesive P-seal provided as standard.

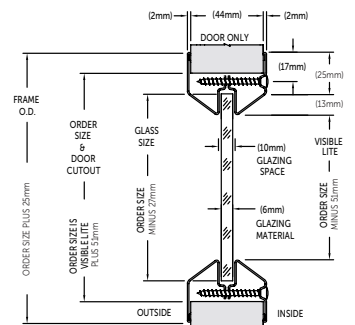
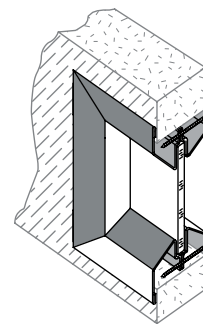
### Threshold



### Frame and Leaf Profile



### Vision Panel



### Louvre Panel

